

## Machining line for processing brake yoke holders

The line consists of 4 cabin-type working 3D CNC control modules. The modules are connected via the component conveyor. The line is equipped with chip management and each module contains suction equipment.

### A photo of a technological line



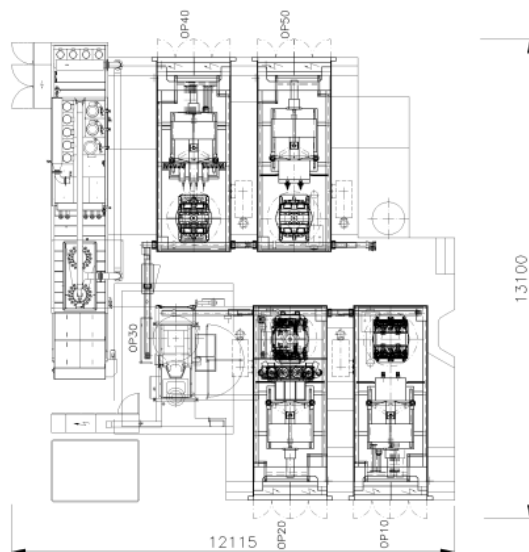
### Brake yoke holder semi-product



### Brake yoke holder - final product



### A diagram of a technological line:



- *The detailed data are not binding with respect to ongoing development; the basic version can be adapted according to customer requirements.*

## Machined component

**Workpiece:** Disk brake holder from a passenger vehicle

**Material:** Casting from malleable cast iron GGG 55 according to

### **Carried out operations:**

**OP 10** milling surfaces P and vent heads, vent winding, drilling assembly holes.

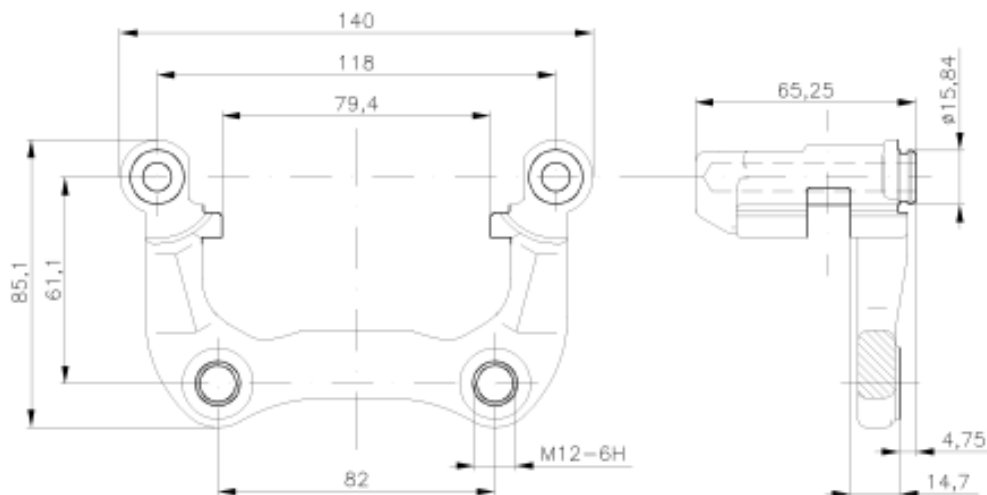
**OP 20** milling slots

**OP 30** broaching (HOFFMAN)

**OP 40** centre drilling for guide pins, drilling holes for guide pins, reaming holes for guide pins

**OP 50** threading assembly holes, parting off holes for dust cover

### **Scheme of processed component**



- *The detailed data are not binding with respect to ongoing development; the basic version can be adapted according to customer requirements.*